



**Caravelle/Royale/Bondi
305 Round Front and
Elongated Bowl.
Vitreous China
1.6 gal (6 l) Dual Flush
Low Consumption,
Two Piece
Washdown Toilets.**

**PLUMBERS INSTALLATION INSTRUCTIONS PLEASE
READ CAREFULLY BEFORE INSTALLATION**

Rough in:

It is essential for the installation of all 305 Two Piece Washdown toilets that the closet flange be accurately set out from the finished wall as detailed in **Fig. 3**.

IMPORTANT:

Reducing Wax rings must not be used when installing this toilet pan, as detailed in **Fig. 2**.

Working Water Pressure:

USA & Canada: Recommended working water pressure is 20-80psi (140-550Kpa).

Closet Bowl Fixing Procedure:

- 1- Position 'T' bolts into closet flange, as detailed in **Fig. 3**.
- 2- Position wax seal onto closet flange.
- 3- Ensure that the area around the closet bowl is clean and free from building material.
- 4- It is recommended that a bead of acetic cured silicone caulking is applied fully around base of the closet bowl.
- 5- Accurately align the closet bowl over the closet flange and lower into position.
- 6- Secure Closet bowl by hand tightening nuts and washers onto the 'T' bolts.
Apply an additional 1/2 turn for final installation.
- 7- Remove any excess silicone caulking.

Tank Fixing Procedure:

- 1- Ensure the foam seal is fitted onto the tail piece on the underside of the tank, as detailed in **Fig. 4**.
- 2- Lower tank onto closet bowl, allowing the two tank fixing bolts protruding below the tank to locate in the corresponding holes in the closet bowl.
- 3- Fit the plastic wing nuts provided onto the tank fixing bolts which are protruding through the closet bowl and gradually tighten the left and right hand nuts by hand to evenly secure tank to closet bowl.
- 4- Connect water supply and check operation.

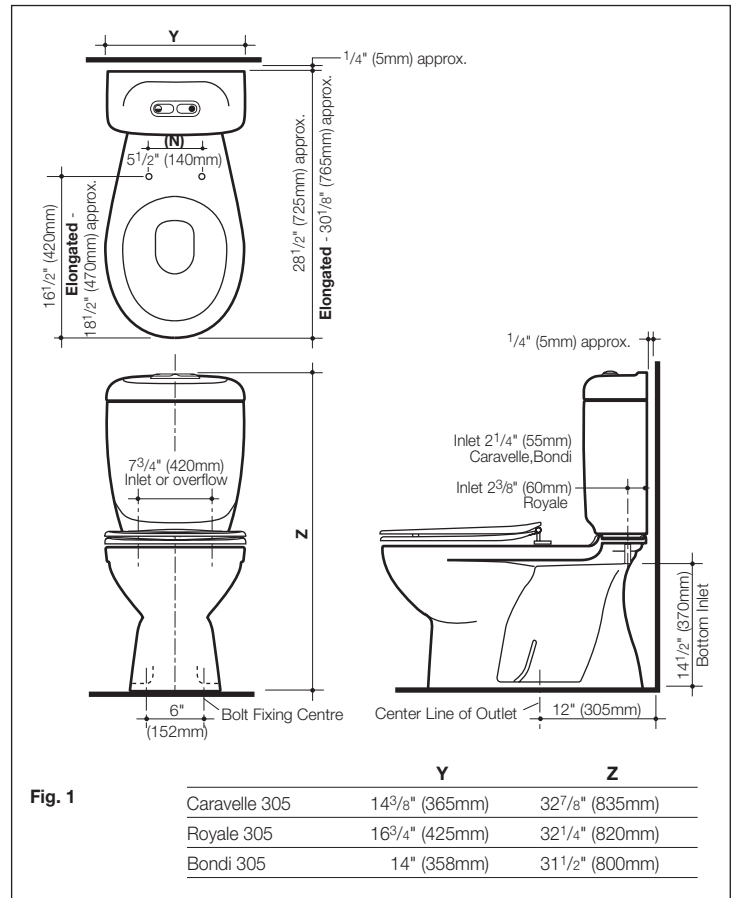


Fig. 1

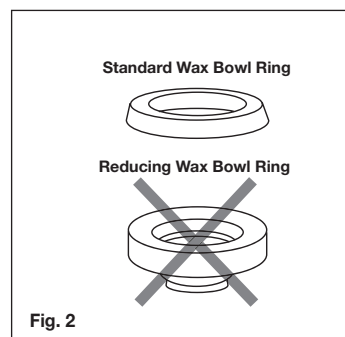


Fig. 2

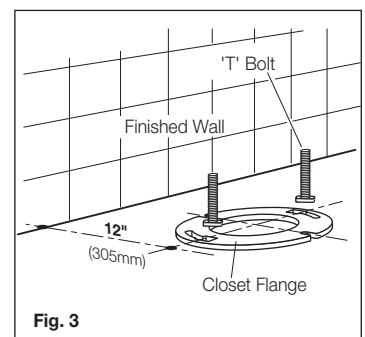


Fig. 3

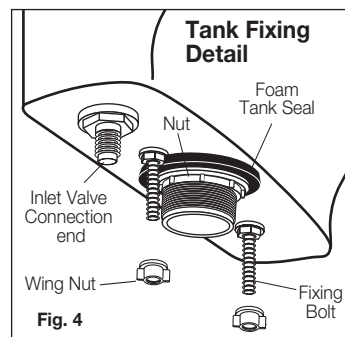


Fig. 4

(N) Non standard item. (Canada)
All measurements are subject to accepted manufacturing tolerances. To ensure complete accuracy please check actual product dimensions before drilling for installation.
The manufacturer reserves the right to change specifications at any time without giving prior notification.
This product should be installed by a qualified plumber. Local authority, Water Board, and Building Regulations may apply to the installation of this product, and you should consult the appropriate bodies on these requirements. Failure to comply may invalidate the product warranty.

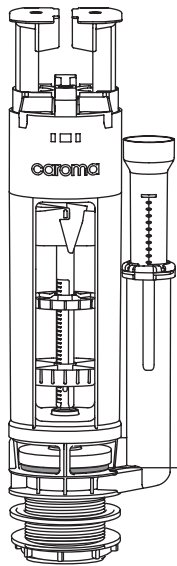
Caravelle/Royale/Bondi 305 Round Front & Elongated Bowl Vitreous China 1.6 gal (6 l) Dual Flush Low Consumption, Two Piece Washdown Toilets.

CLEANING INSTRUCTIONS FOR VITREOUS CHINA

To preserve the glazed surface, this toilet should be cleaned with a mild household detergent or warm soapy water.

Cistern Spare Parts —

M5 Outlet Valve Replacement Parts

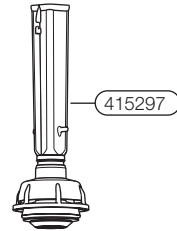


Code	Part Description
750017	M5 Outlet valve diaphragm seal
750285	M5 Outlet Valve (Bondi)
750289	M5 Outlet Valve (Caravelle)
750290	M5 Outlet Valve (Royale)

750017

Caroma USA, Inc.
Caroma Canada Industries Limited
For spare parts contact
Internet
www.caromausa.com
Phone: 1 800 605 4218

Hi-flo Outlet Valve Replacement Parts



415297

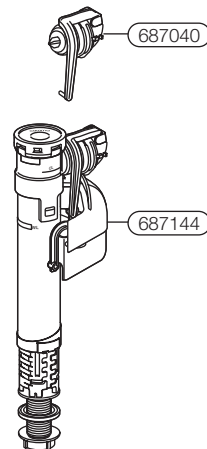


687205

Code	Part Description
415297	Hi-Flo Outlet Valve – Spare Part Kit
687205	Cistern Tail Seal – 2000 Series

Caroma USA, Inc.
Caroma Canada Industries Limited
For spare parts contact
Internet
www.caromausa.com
Phone: 1 800 605 4218

Quietflow 2 Inlet Valve Replacement Parts



687040

687144

Code	Part Description
687040	Quietflow 2 repair kit
687144	Quietflow 2 USA Inlet Valve

Caroma USA, Inc.
Caroma Canada Industries Limited
For spare parts contact
Internet
www.caromausa.com
Phone: 1 800 605 4218



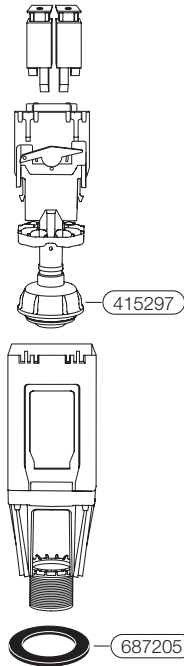
Vitreous China 1.6 gal (6 l) Dual Flush Low Consumption, Two Piece Washdown Toilets.

CLEANING INSTRUCTIONS FOR VITREOUS CHINA

To preserve the glazed surface, this toilet should be cleaned with a mild household detergent or warm soapy water.

Cistern Spare Parts —

Hi-flo outlet valve replacement parts

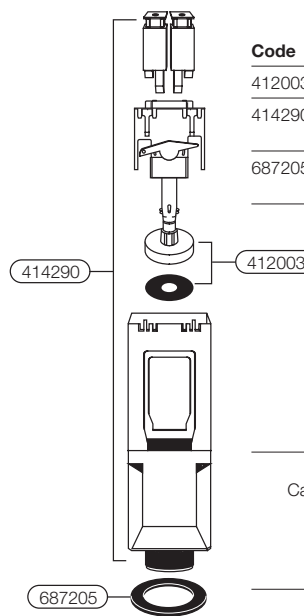


Code	Part Description
687205	Cistern Tail Seal – 2000 Series
415297	Hi-Flo Outlet Valve – Spare Part Kit
415043	Hi-Flo Outlet Valve – Type HF04S (Caravelle)
415042	Hi-Flo Outlet Valve – Type HF03S (Royale)
415056	Hi-Flo Outlet Valve – Type HF14S (Bondi)
415047	Hi-Flo Outlet Valve – Type HF07S (Sydney)

Caroma USA, Inc.
Caroma Canada Industries Limited
For spare parts contact
Internet
www.caromausa.com
Phone: 1 800 605 4218

Cistern Spare parts

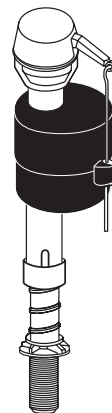
Duo-flow outlet valve replacement parts



Code	Part Description
412003	Outlet Valve Spare Part Kit
414290	Duo-flow Outlet Valve – Type 31
687205	Cistern Tail Seal – 2000 Series

Caroma USA, Inc.
Caroma Canada Industries Limited
For spare parts contact
Internet
www.caromausa.com
Phone: 1 800 605 4218

Fluidmaster Model 400A Replacement Parts



Code	Part Description
687148	Fluidmaster Inlet Valve

Available from leading hardware
plumbing supply wholesalers